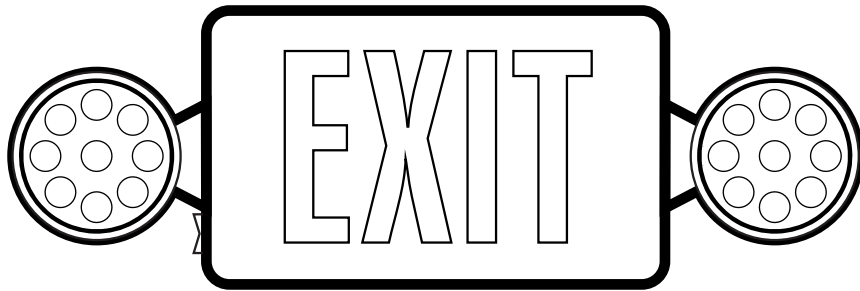




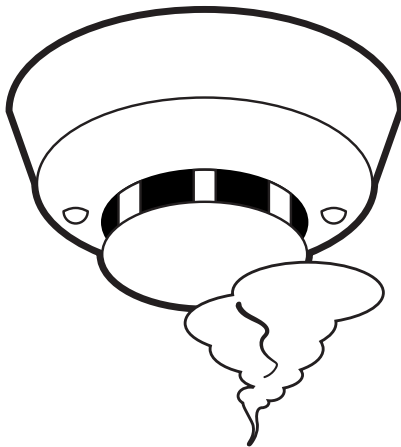
FIRE PROTECTION
AWARENESS

GAMES AND ACTIVITIES

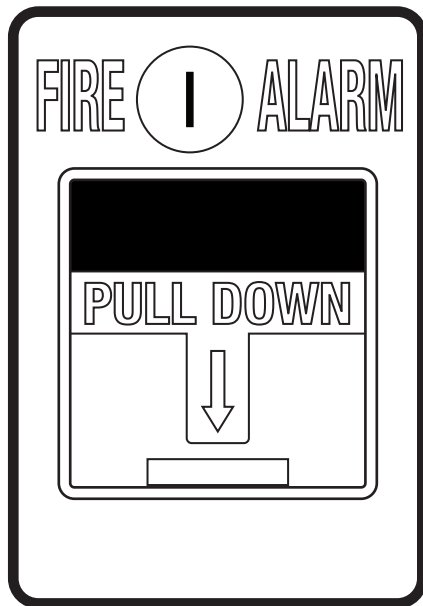
Do you recognize these FIRE PROTECTION ITEMS?



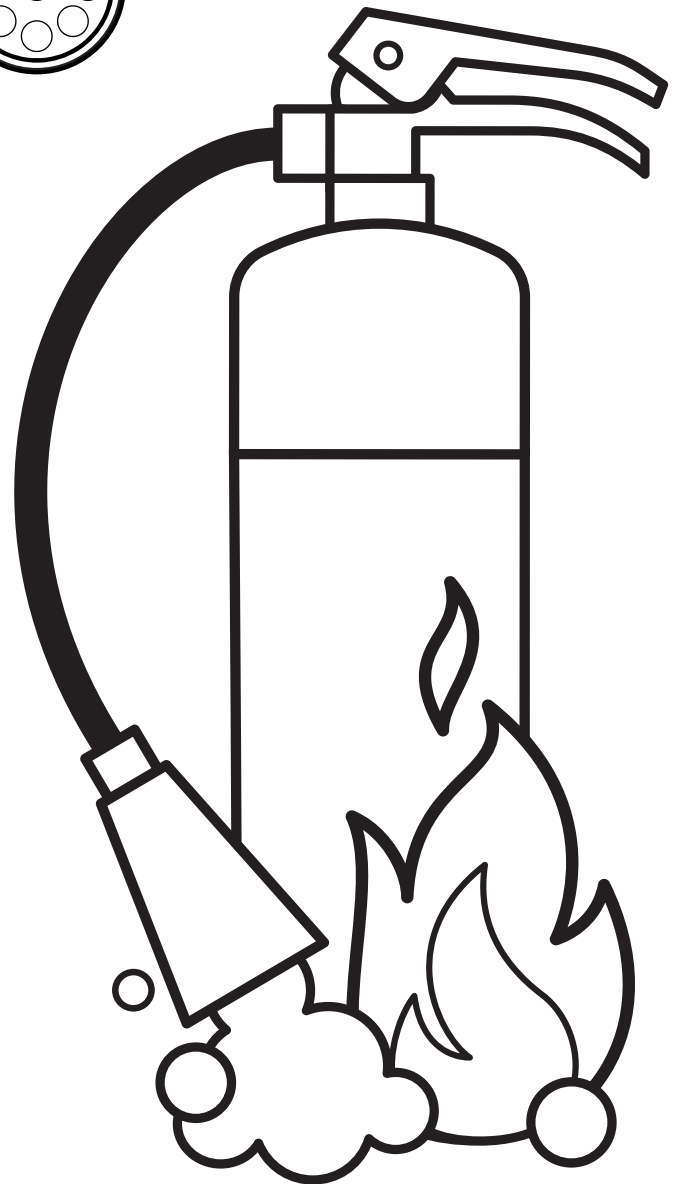
Emergency exit light



Smoke detector



Fire alarm



Fire extinguisher

Do you know how to use a **FIRE EXTINGUISHER?**



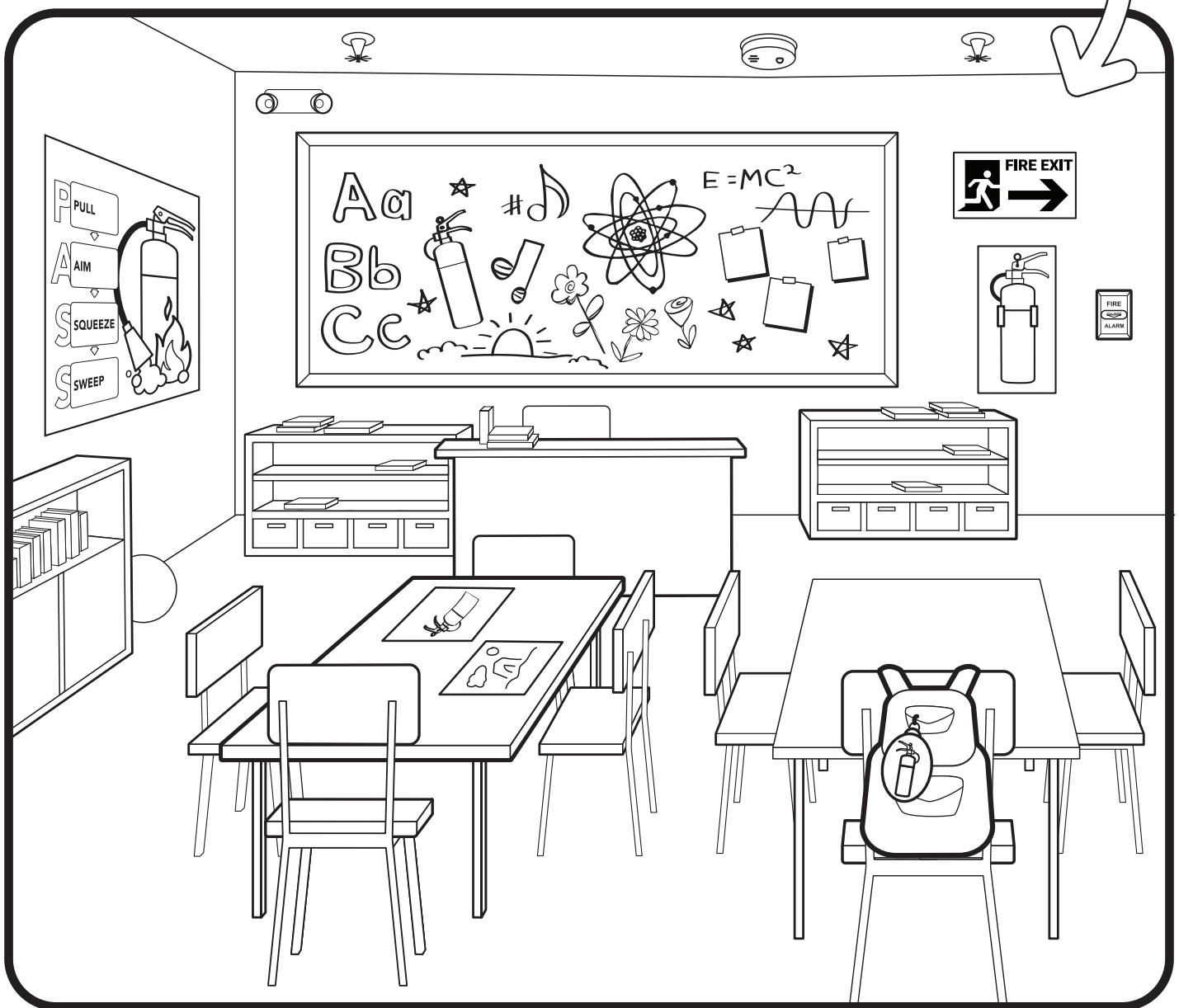
My nearest
extinguisher
is located:

Can you find all the FIRE EXTINGUISHERS?

Find **FIVE** fire extinguishers in the picture and color them **RED**.

It's important to know what a fire extinguisher looks like and where to find one. They are usually red and hanging on the wall near a door. Fire extinguishers should only be used during a fire emergency.

SEE LAST PAGE FOR ANSWER KEY

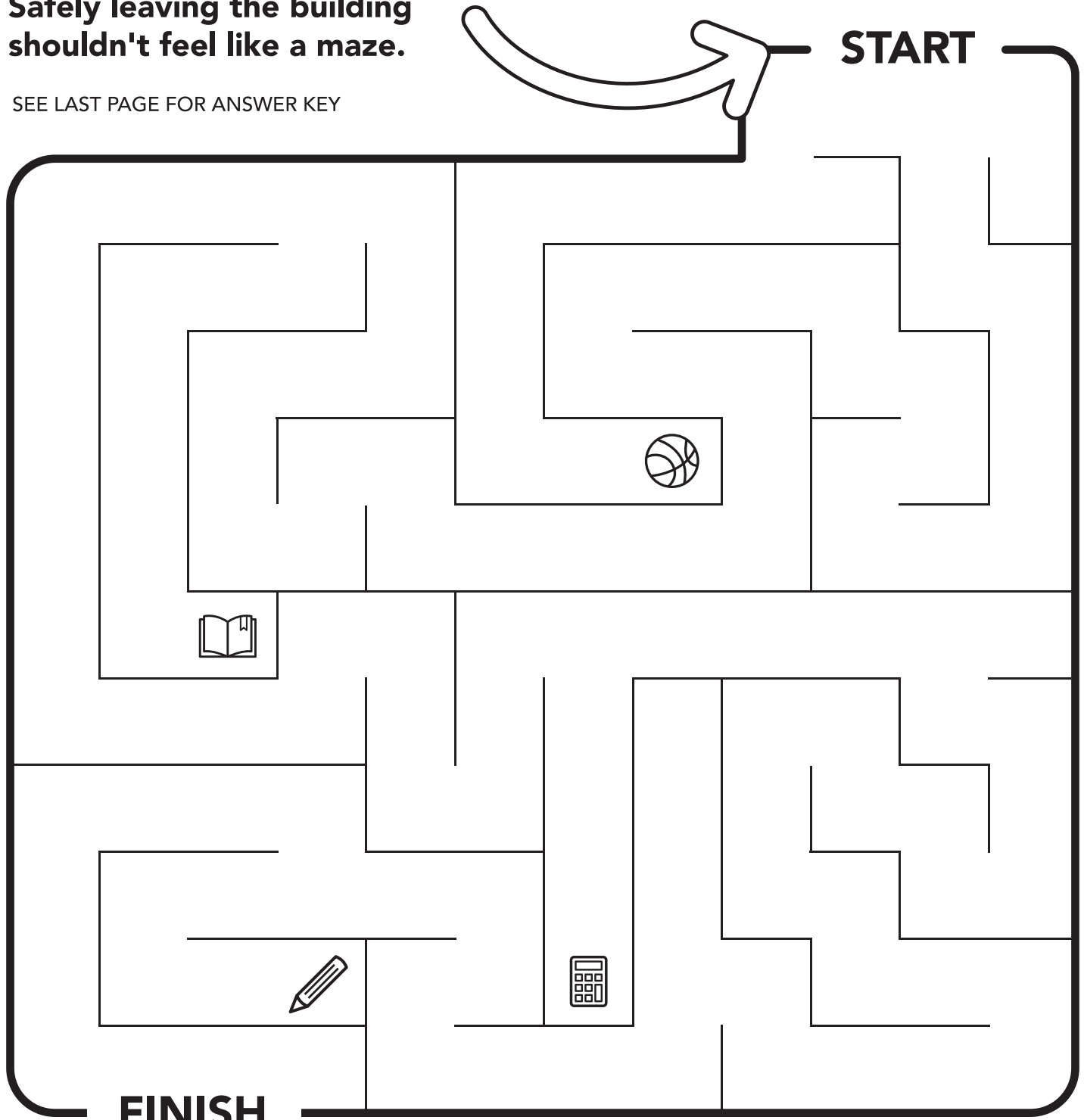


Q Circle the other items you see that could be helpful in a fire emergency

KNOW YOUR EXITS

Safely leaving the building shouldn't feel like a maze.

SEE LAST PAGE FOR ANSWER KEY

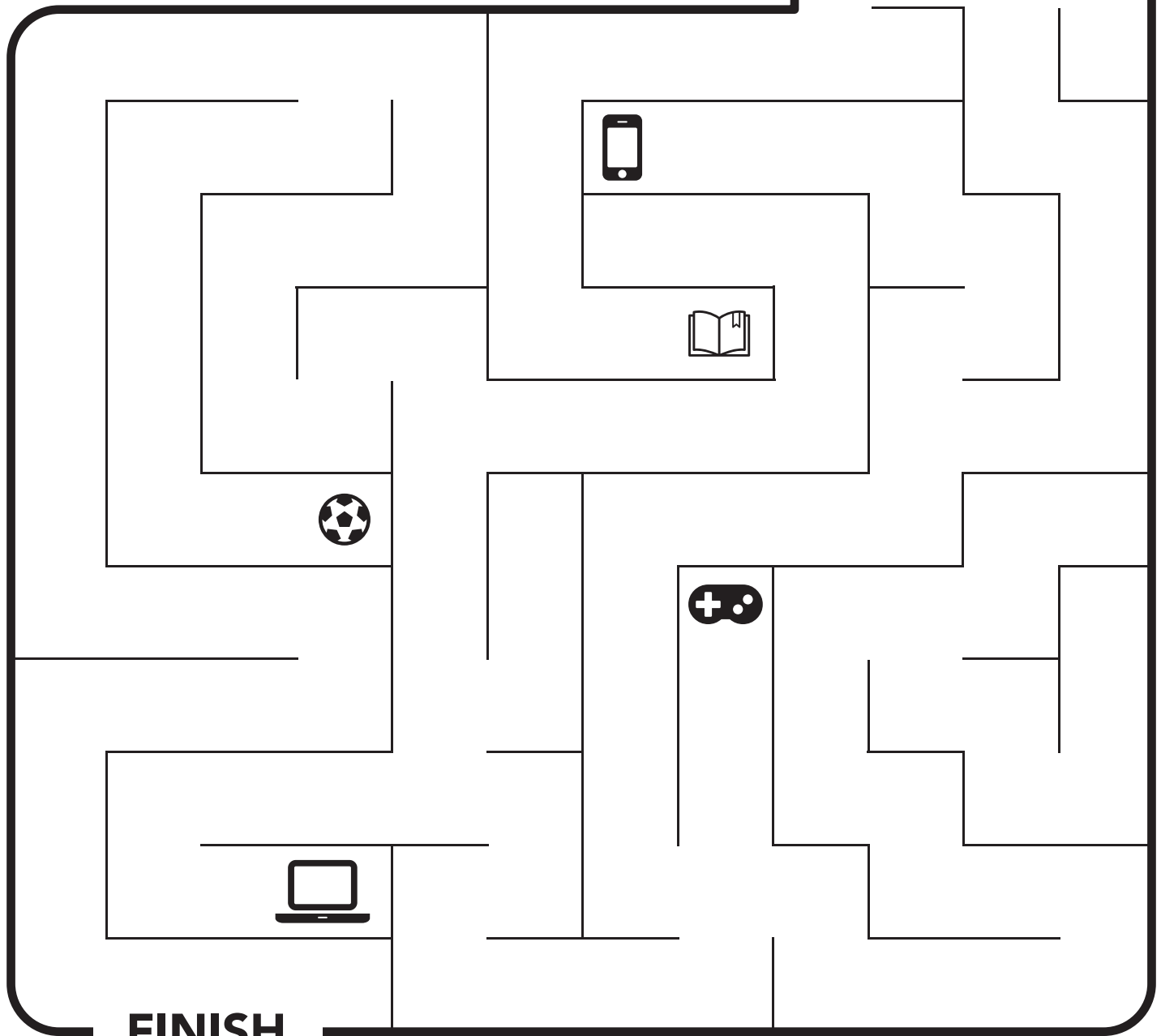


Exit signs look like this and the arrow points towards the nearest exit. Use exit signs in hallways and above doors to help you find the way out. Emergency lights will light your way if there's a power outage.

KNOW YOUR EXITS

Safely leaving the building shouldn't feel like a maze.

SEE LAST PAGE FOR ANSWER KEY



FINISH



Exit signs look like this and the arrow points towards the nearest exit. Use exit signs in hallways and above doors to help you find the way out. Emergency lights will light your way if there's a power outage.

Can you find all the FIRE PROTECTION WORDS?

Find and circle the fire protection words below

SEE LAST PAGE FOR ANSWER KEY



S	P	R	I	N	K	L	E	R	H	E	A	D	T
Z	T	A	E	D	S	V	W	N	P	O	F	H	N
F	O	E	V	L	U	M	R	H	U	Y	G	M	E
I	M	X	C	A	E	I	X	J	L	I	L	T	X
R	P	I	H	E	K	F	Q	T	L	B	I	E	T
E	E	T	L	P	B	X	E	Y	S	G	D	P	I
A	O	S	G	J	Y	E	C	W	T	E	Z	U	N
L	E	I	Z	Q	V	N	B	S	A	N	C	A	G
A	K	G	R	T	E	W	Y	R	T	J	E	F	U
R	E	N	X	G	U	O	K	E	I	S	V	H	I
M	E	S	R	E	D	L	A	P	O	Q	R	E	S
N	Q	E	E	M	E	F	X	C	N	W	E	D	H
S	M	O	K	E	D	E	T	E	C	T	O	R	E
E	V	P	I	B	U	Z	M	E	B	A	T	G	R

Extinguisher

Exit Sign

Emergency Light

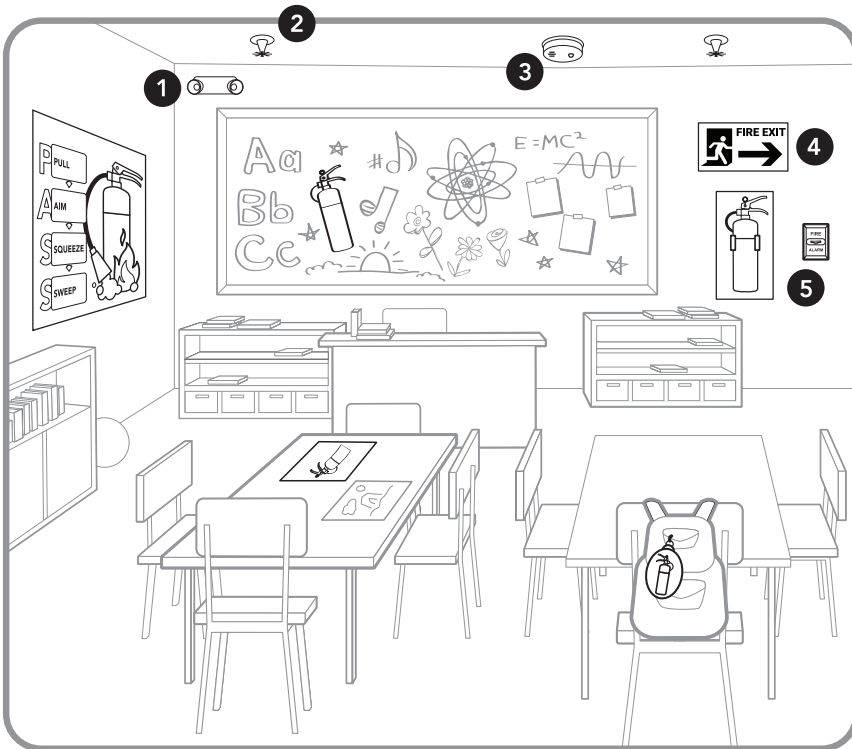
Smoke Detector

Sprinkler Head

Pull Station

Fire Alarm

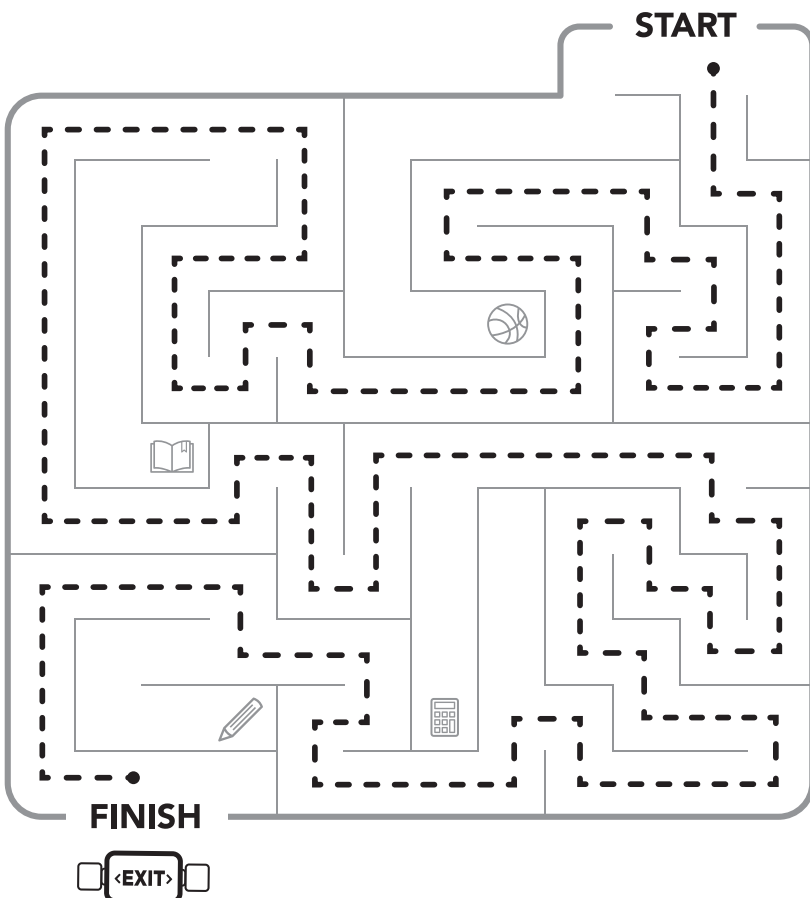
Answer Key



Can you find all the FIRE EXTINGUISHERS?

Q: What else do you see that could be helpful in a fire emergency?

- A:**
- 1 Emergency Light**
Helps light the way during a power outage
 - 2 Sprinkler Head**
Sprays water to help control or slow a fire
 - 3 Smoke Detector**
Detects smoke to help sound the alarm if a fire occurs
 - 4 Exit Sign**
Points to the nearest exit path
 - 5 Fire Alarm Pull-Station**
Activates the fire alarm during an emergency

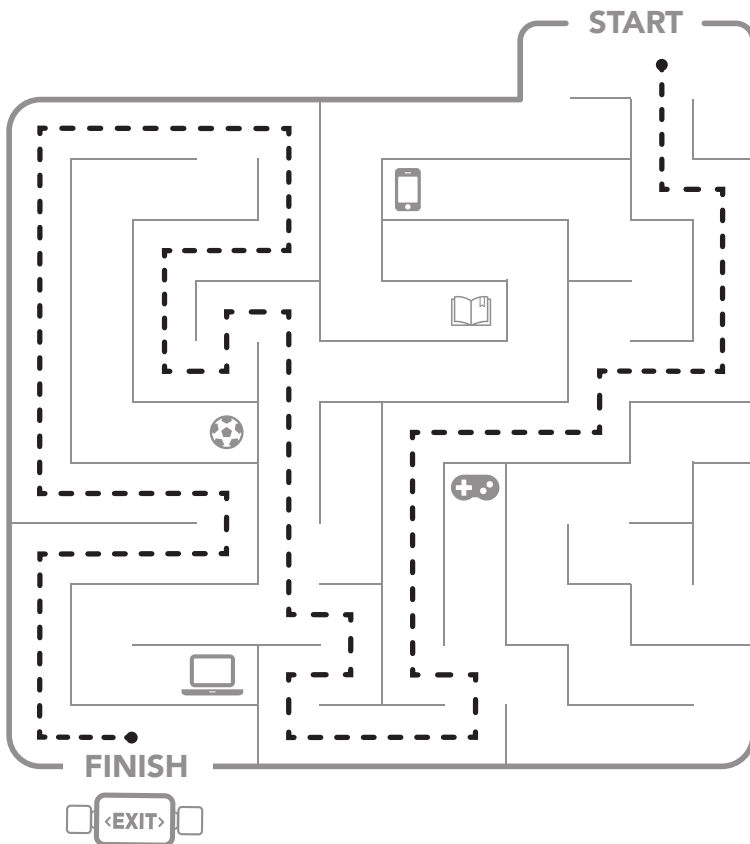


KNOW YOUR EXITS

Answer Key



Can you find all the
**FIRE PROTECTION
WORDS?**



**KNOW
YOUR EXITS**