



RENTAL CULINARY APPAREL  
EXCLUSIVELY FROM **CINTAS®**

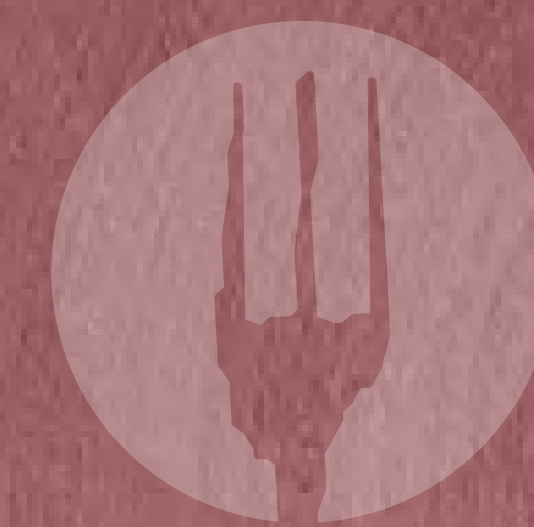
# CHEF WORKS STYLE / CINTAS EASE





# THE PERFECT PARTNERSHIP

Chef Works® is the world's largest and most trusted culinary apparel provider, so an exclusive partnership with Cintas just makes sense. This collaboration brings you the best of both worlds – the innovative and industry-leading Chef Works® apparel you know and love, combined with a top-notch Cintas laundry service. It's the ultimate culinary fusion experience delivered right to your kitchen.



Chef Works®

RENTAL CULINARY APPAREL  
EXCLUSIVELY FROM CINTAS®



PRODUCT GUIDE CONTENTS

# BETTER KITCHENS START HERE





CHEF WORKS SIGNATURE LINE

# FRESH LOOKS IN THE KITCHEN



## Chef Works® Signature Snap Coat

This new lightweight Signature Snap Coat is made of breathable fabric– ensuring coolness and comfort throughout the workday. Features include double-breast with concealed snap closure, thermometer pocket for carrying essentials tools and side vents to keep wearers cool. Long sleeves roll-up and secure with snap tab.

**74171** White (00), Black (35), Gray (30)





CHEF WORKS SIGNATURE LINE

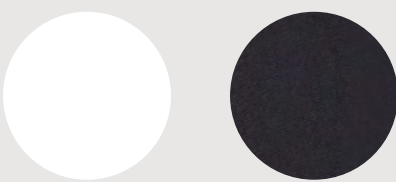
# PRACTICAL IN THE KITCHEN



## Chef Works® Women's Signature Snap Coat

This new lightweight Signature Snap Coat is made of breathable fabric– ensuring coolness and comfort throughout the workday. Features include double-breast with concealed snap closure, thermometer pocket for carrying essentials tools and side vents to keep wearers cool. Long sleeves roll-up and secure with snap tab.

**74172** White (00), Black (35)





CHEF WORKS SIGNATURE LINE

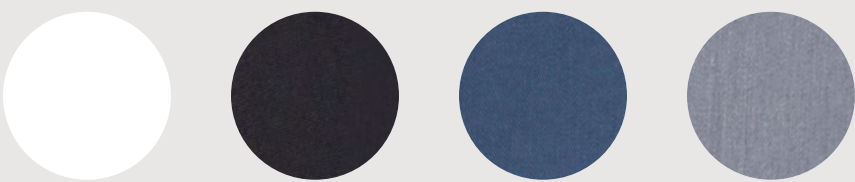
# WHERE CULINARY MEETS COOL



## Chef Works® Signature Chef Coats

Lightweight breathable fabric makes this chef coat cool and comfortable. Left chest pocket and thermometer pockets for carrying essentials tools for the workday. Side vents keep wearers cool and allow for a unisex fit. Available in long and short sleeve.

**64449** White (00), Black (35), Airforce Blue (21), Gray (30)





CHEF WORKS SIGNATURE LINE

# A CUT ABOVE



## Chef Works® Signature Lightweight Cook Shirt

Moisture wicking performance mesh panels. Lightweight breathable fabric. Left chest pocket and thermometer pocket.

**64251** White (00), Black (35)





CHEF WORKS SIGNATURE LINE

# COMFORT MEETS STYLE



Breathable  
fabric

Elastic stretch  
waistband



## Chef Works® Pants

Built to breathe in the hottest of kitchens with maximum comfort. Pair with the Signature Chef Coat for the perfect look.

**74079** Black (35)





READY™ FOR THE RUSH



Chef Works® Urban Denim Apron

Two utility chest pockets and double front pockets, this item takes functionality to a whole new level.

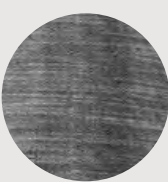
**78543** Denim (24)



Chef Works® Crosshatch Apron

Features reinforced stress points and an adjustable grommet. The two hop pockets are large enough to hold an iPad.

**74077** Steel Gray (31)



Chef Works® Chalk Stripe Apron

Two oversized front pockets for essential tools. Can be worn as a bib or bistro apron. One size fits most.

**64250** Chalk Stripe (36)





# INDEX





# OUTFIT YOUR KITCHEN WITH EASE

## How an **APPAREL+** Program Works



\*With enrollment in Uniform Advantage



# VISIT OUR CHEF WORKS SITES





OWN YOUR STYLE

# COMPLETE YOUR LOOK FROM HEAD TO TOE

Cintas® is here for all your workplace apparel needs from headwear, footwear, and anything in between\*. You'll find hard-working, high-quality gear to match everyone's style because what you wear is an expression of who you are.

## TO ORDER (USA)

Call: 800.786.4367

Email:

## TO ORDER (CANADA)

Call: 800.CINTAS1



\*Product selection varies by market







RENTAL CULINARY APPAREL  
EXCLUSIVELY FROM **CINTAS**

800.CINTAS1 |

|

**UNIFORMS | FACILITY SERVICES | FIRST AID & SAFETY | FIRE PROTECTION\***

\*Available in select markets